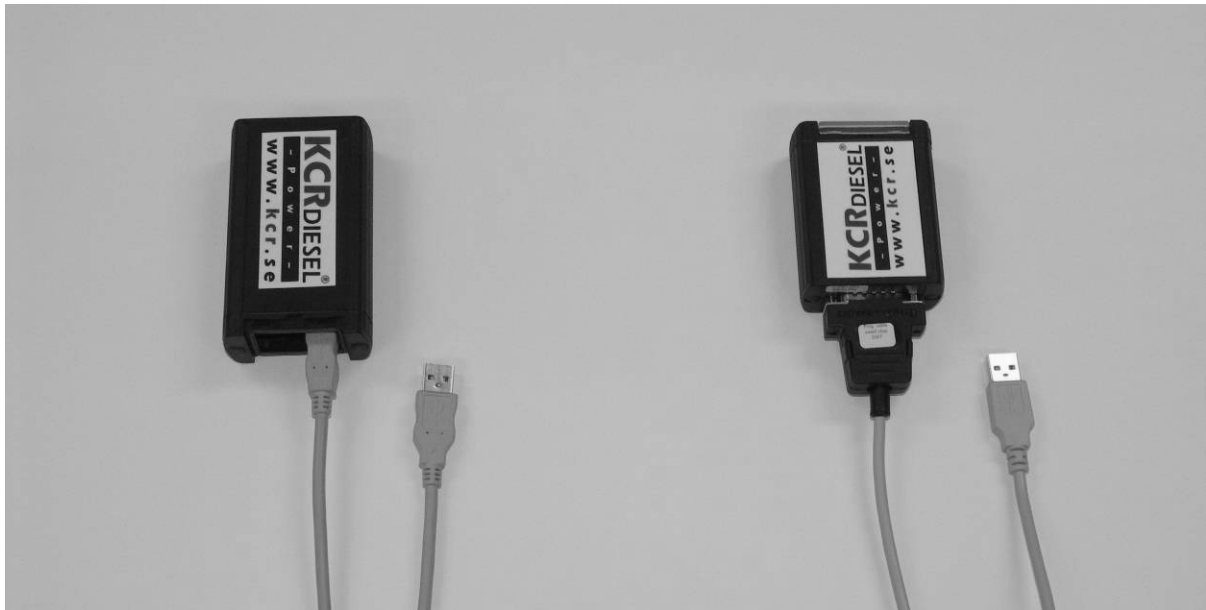


# Installation of KCR software and drivers for KCR boxes

*Windows XP, Windows Vista and Windows 7*

**Important: Install the software and driver BEFORE the programming cable is connected to the computer**



**Left:** KCR box with an USB connector. Use a standard USB A-B cable

**Right:** Newer version introduced 2007. Use a programming cable marked "Prog cable small chip 2007".

Both boxes use the same software and driver

***Important: Follow these steps to install properly:***

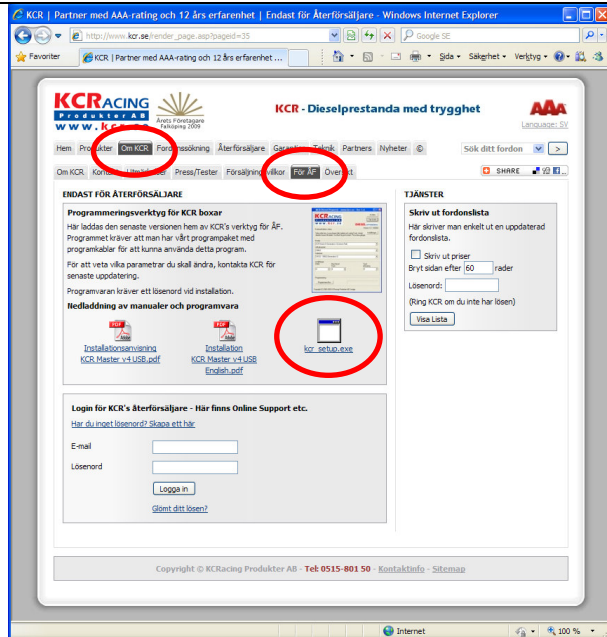
1. Installation of software
2. Installation of USB drivers
3. Connect a programming cable to the computer
4. Connect and reprogram a KCR box

# 1. Software installation

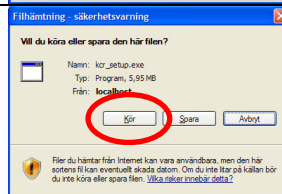
## Download software

Browse to [www.kcr.se](http://www.kcr.se)  
 Select "About KCR"  
 Select "For resellers"

Click "KCR Setup.exe"

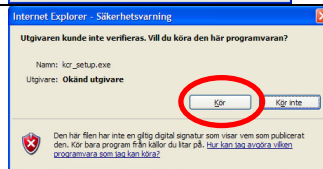


Click "Run"



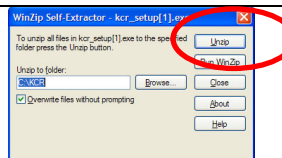
## Safety warning

Click "Run"



## Install

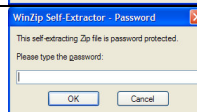
Click "Unzip" to install into C:\KCR



## Password

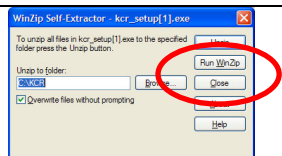
Enter the password and select "OK"

Contact KCR and state your reseller number to receive your password.



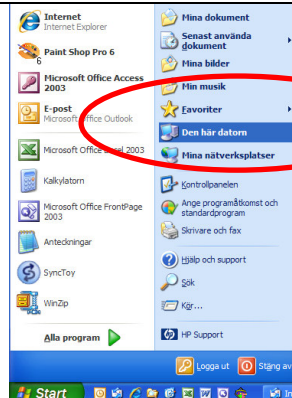
## End the installation

Click "Close" to exit

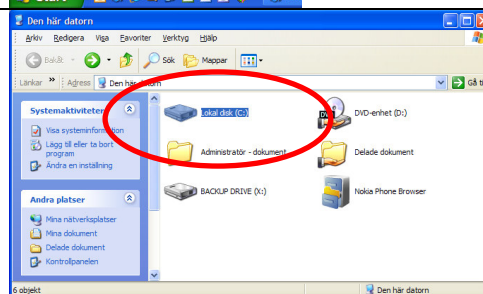


## 2. USB driver installation

Open **"This computer"** on the Start menu

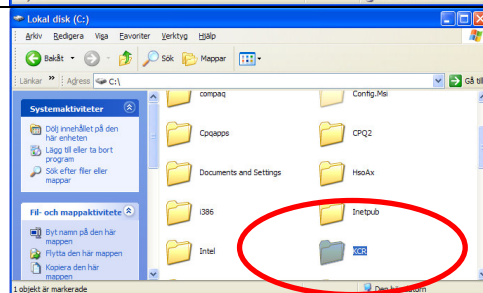


Double-click to open **"Local disk C:"**

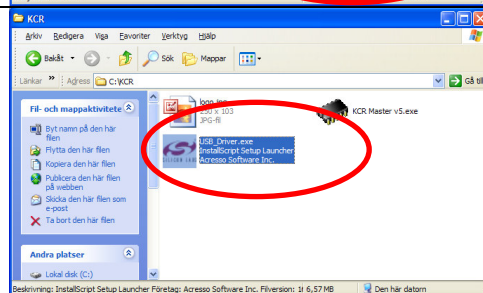


Browse to the **"KCR"** folder

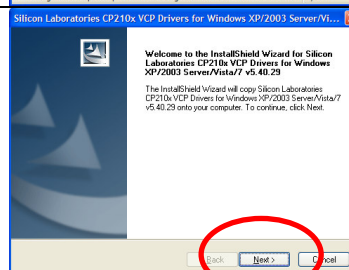
Double-click to open **"KCR"**

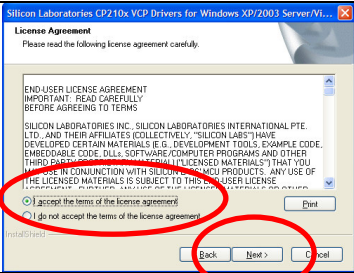
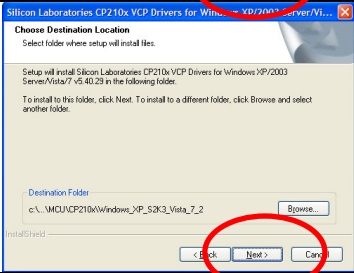
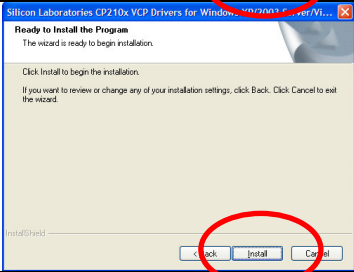
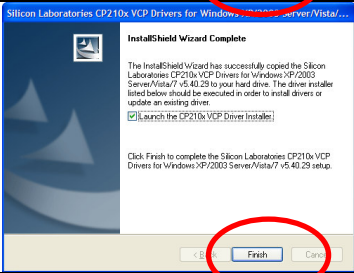
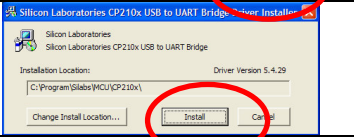


Double-click to open **"USB\_Driver.exe"**



Click **"Next >"**



<p>Click <b>"I accept the terms of the license agreement"</b></p> <p>Click <b>"Next &gt;"</b></p>	
<p>Click <b>"Next &gt;"</b></p>	
<p>Click <b>"Install"</b></p>	
<p>Click <b>"Finish"</b></p>	
<p>Click <b>"Install"</b></p>	
<p><b>Driver is now installed</b></p> <p>Note: If you have an older version installed previously, you will be asked to remove it. Please select to remove it.</p>	

### ***3. Connect the KCR programming cable to the computer***

#### **Connect the programming-cable**

Connect it to a free USB port

Wait

The driver should now install automatically



## 4. Connect and reprogram a KCR Box

**Connect a KCR-box to the programming-cable**

**Launch the software**

See step 2 how to navigate to the "KCR" folder

Double-click "KCR Master v5.exe"



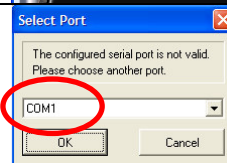
**Read settings**

Click "Get Parameters"



**Invalid port?**

If this dialogue pops up, change the COM port and click "OK"



**Change settings**

Click to the left or right of a value to change it.

**Important**

Contact KCR to for guidance what to change



**Store settings**

Click "Set Parameters"

To confirm the settings, click "Get Parameters" again



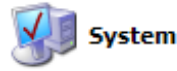
**Remove the KCR-box**

The box can now be reinstalled

# Troubleshooting

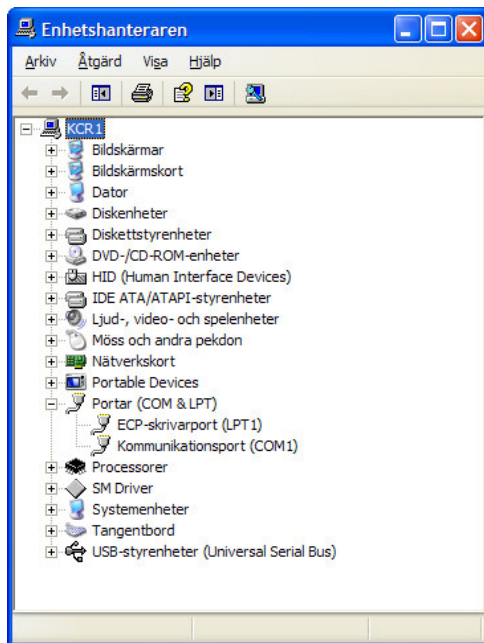
If the installation of the USB driver fails, read these tips below:

1 Do the installation of the driver again. Sometimes this has to be performed many times to work properly.

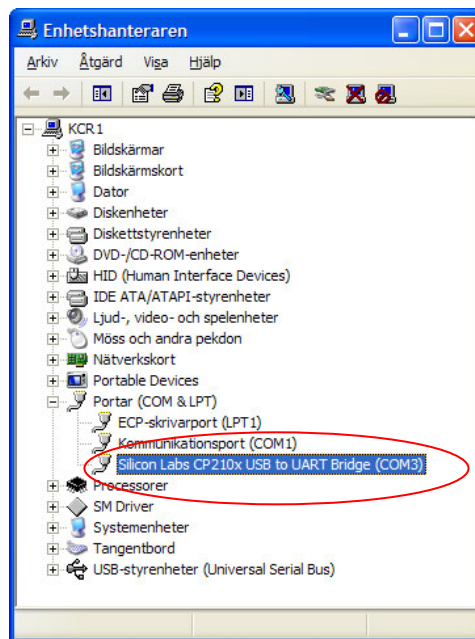


2 Open "System" in the Control Panel.

Select "Hardware" and "Device Manager".



Without programming cable



With programming cable connected

Verify the situation with and without the box connected. The interface circuit is named "CP2102" on the KCR box. If there are some red or yellow icons the indicate errors. Please resolve these errors.

## Shortcut on the desktop

If you easily want to launch the software from the desktop:

Highlight the file "**KCR Master III v5.exe**", Right-click and drag the icon to the desktop. When releasing the button, select "**Create Shortcut here**" from the menu.

Note: If you MOVE the file (with the left button) the software will not work properly.